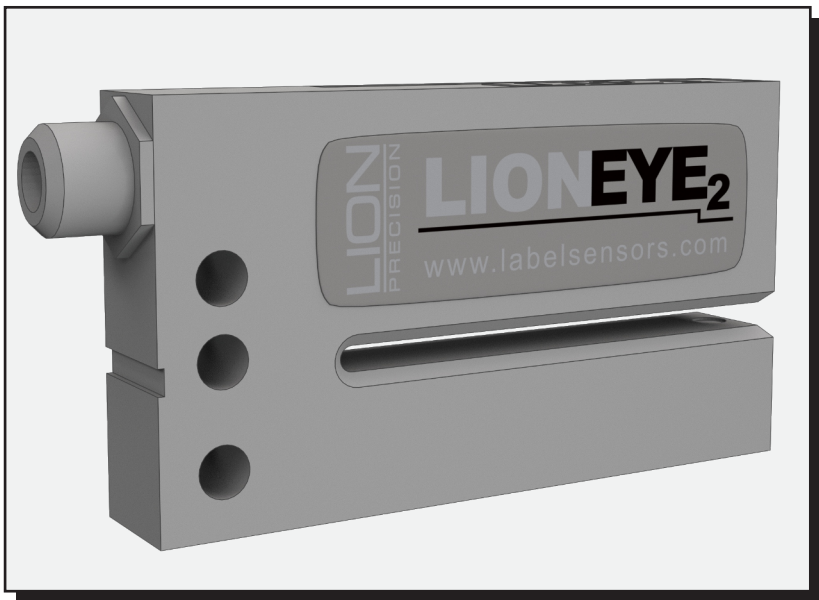


LION

PRECISION



USER'S GUIDE

for the

LIONEYE 2

Photoelectric Label Sensor

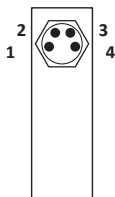
Description

The Lion Precision LionEye2 is an inexpensive optical sensor for the detection and registration of label edges and splices. The sensor output signal indicates the leading or trailing edge of the label as it passes through the sensor.

Connecting to the Sensor

Pin	Color	Connection
1	Brown	10-30VDC
2	White	NPN Output (Current Sinking), 100mA, 0.2μf max load
3	Blue	Ground (0VDC)
4	Black	PNP Output (Current Sourcing) 100mA, 0.2μf max load

M8 Connetor Pins



Specifications

Power Supply	Voltage	10 - 30 VDC
	Residual Ripple	10% (must remain within 10-30 VDC)
	Current	40mA
Response Time	on or off	50μs max
	Switching Frequency	10kHz max
Output	Output Current (sinking or sourcing)	100mA max
	Switching Output	NPN (white), PNP (black)
	Output voltage drop at 100 mA	2 V
	Output voltage drop at 10 mA	1 V
Emitter	LED (continuous)	Infrared
Temperature	Operating Range	-4°F to +140°F (-20°C to 60°C)
External Light Immunity	Artificial Light	5,000 Lux
	Daylight	10,000 Lux
Protections	Supply	Inverse Polarity Protection
	Switching Output	Short Circuit and Overload Protection
	Degree of Protection	IP 65

Important Indications

Red LED on steady: Sensor Setup Locked
Yellow LED is on when outputs are activated/on

Teach Mode Setup Procedure

Step 1

Place web only in sensor (remove a label, or carefully center a gap in the sensor).
Press [+] and [-] at the same time for less than one second.
The red LED will begin to flash.

Step 2

Place a label in the sensor.
Press [-] for less than one second.
The red LED stops flashing.

Step 3

Automatic setup is complete (steps 1 and 2 can be reversed).

Manual Adjustments of Sensitivity

The "Teach" mode setup should always be successful. However, the sensitivity of the sensor can be adjusted manually by pressing the [+] or [-] buttons. The red LED will flash with each button press.

Locking/Unlocking the Setup

Press and hold the [+] and [-] for three seconds (but less than six seconds). The red LED will change state. When the buttons are released, the red LED will then indicate locked (red LED on) or unlocked (red LED off).

Light/Dark Switching

Press and hold the [+] and [-] for six seconds. When the mode is changed, the red LED will begin to flash slowly until the buttons are released.

Mechanical Detail

