

VTEDS File Installation

Applicable Equipment:

Spindle Error Analyzer V8 using CB7 (Gray/Black) Cabinet

Applications:

Spindle Error Analysis with SEA 8

Summary:

Details the installation of VTEDS (Virtual Transducer Electronic Data Sheets) for the SEA 8 system when used in conjunction with CB7 capacitive sensor cabinets; CB7 cabinets are black with gray front and rear panels (as opposed to Elite Series sensors in beige cabinets).

TEDS (Transducer Electronic Data Sheets)

The Spindle Error Analyzer (SEA) requires sensor calibration information for proper operation. Rather than require operator entry, SEA 8 reads calibration information from TEDS files. Elite Series capacitive sensors (CPL190/290) are TEDS-Enabled and communicate this calibration information directly from the sensor to the SEA software when the program is launched.

When SEA 8 software is used with older capacitive sensors (DMT20/22) in the gray and black CB7 cabinet, the TEDS information must be provided to the SEA 8 software using Virtual TEDS (VTEDS). A CD-ROM containing the sensors' calibration information is provided, and the files it contains must be installed on the computer where the SEA 8 software can access them.

Using VTEDS Files with SEA 8

Using VTEDS files with SEA 8 requires two steps: Installing the VTEDS files on the computer and configuring SEA 8 to work with the VTEDS files.

Installing the VTEDS Files

VTEDS files are named by the serial number of the associated probe driver (DMT20/22) serial number. For example, a probe driver with serial number 050069-05 would have a VTEDS filename of 050069-05.ted.

The VTEDS files must be installed in "C:\Programs Files\SEA8\VTEDS Files" (assuming "C" is the drive where the Program Files folder is located).

To install the files:

1. Insert the CD in an appropriate drive
2. The CD will automatically install the files in the correct folder. If "Autorun" is disabled on the computer, access the CD and double-click "install.bat."

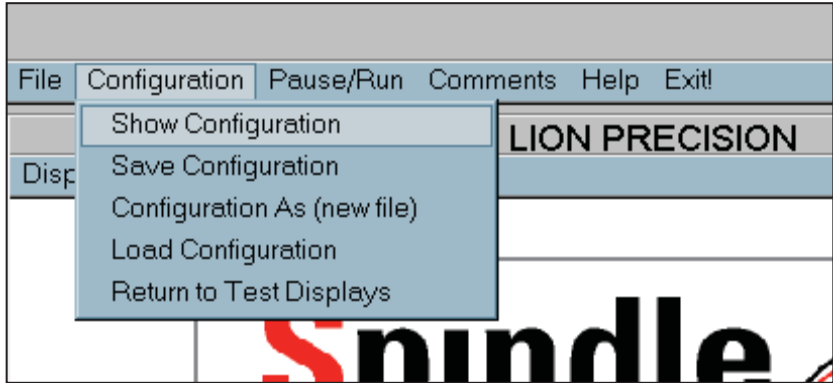
Alternatively, copy the *.ted files and paste them in the VTEDS folder at the location listed above.

When the sensors are recalibrated, new VTEDS files will be provided which will overwrite previous file versions. The SEA8 system will use the updated VTEDS files with no need to reconfigure the SEA8 software.

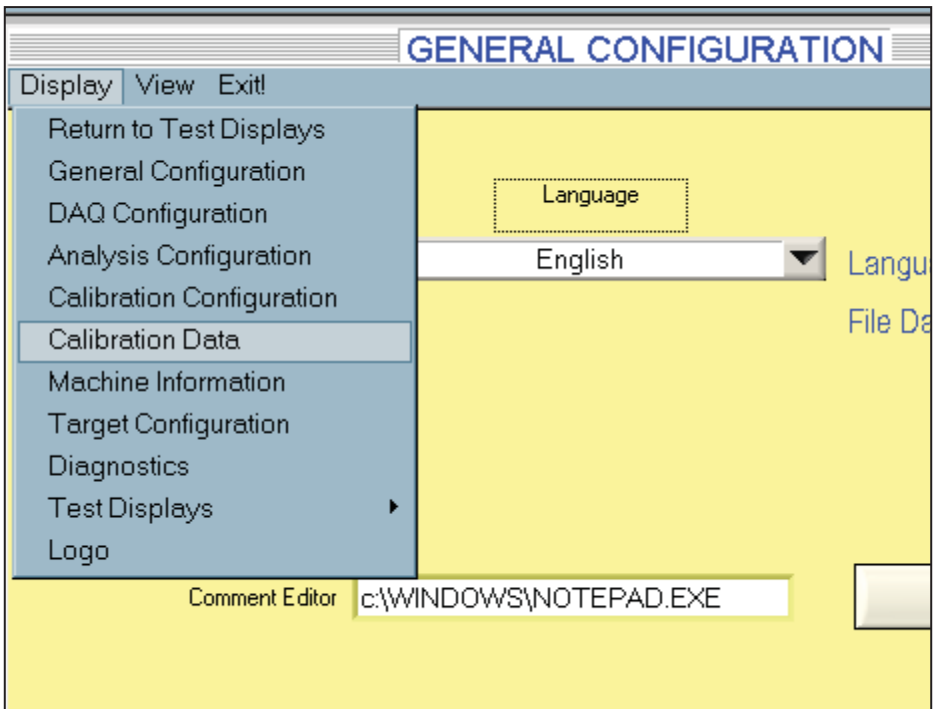
Configuring SEA 8 for VTEDS

This process only needs to be done one time unless the SEA8 software is reinstalled.

Access the SEA configuration panel by selecting *Configuration > Show Configuration* from the main menu bar at the top of the screen.



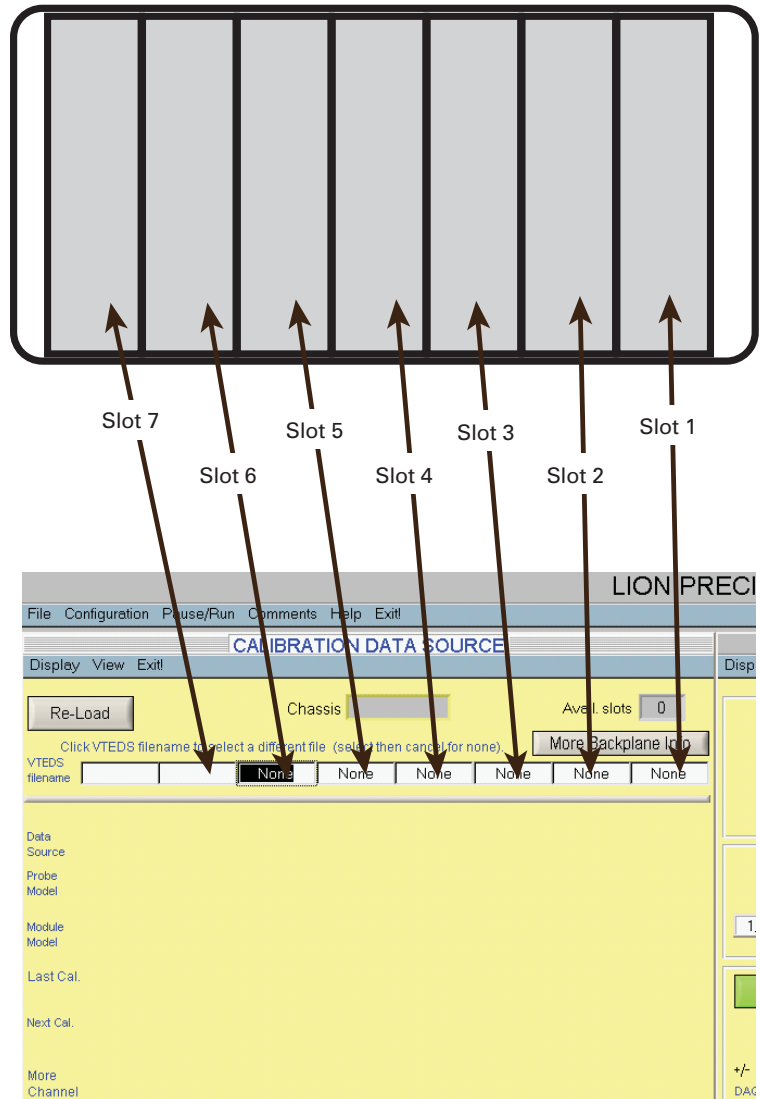
Then select *Display > Calibration Data* from the General Configuration window menu bar.



Each VTEDS file must be associated with the appropriate sensor module in the system. The Calibration Data Source window assigns specific VTEDS files to specific system slots.

Click on "VTEDS Filename" fields near the top of the Calibration Data Source window to select the VTEDS file associated with each slot. Note that the slot number will not be the same as the serial number.

If a TMP temperature module is installed, the associated TEDS file is TMP72.ted



When correct filenames appear in the TEDS filenames fields, click "Re-Load."

Calibration information can be viewed in this window for verification.

SEA 8 is now ready to run; this operation will only need to be repeated if the SEA 8 software is re-installed.